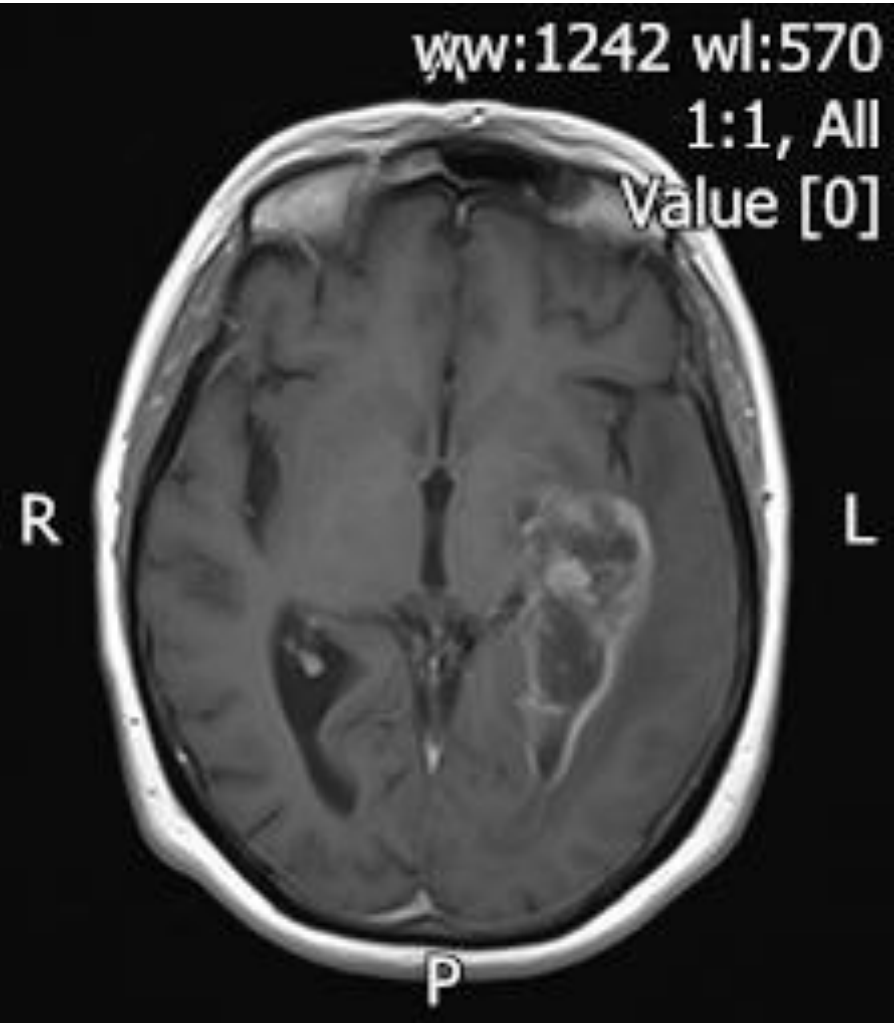
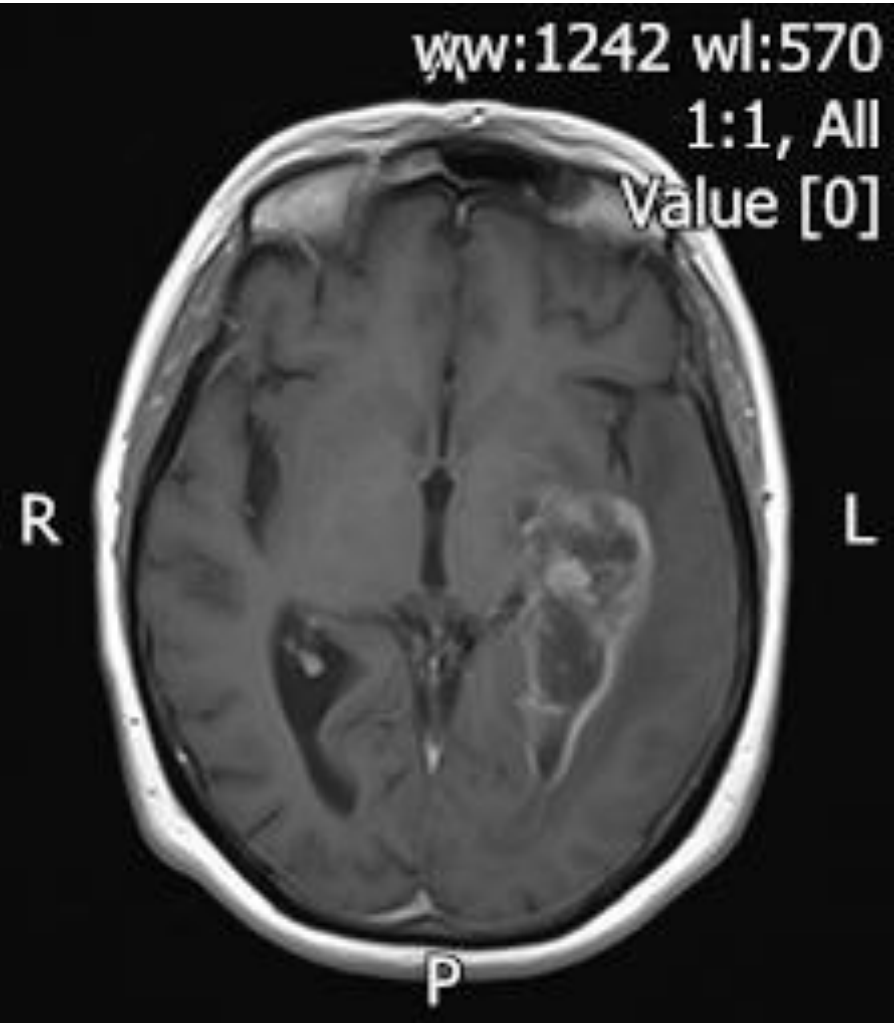
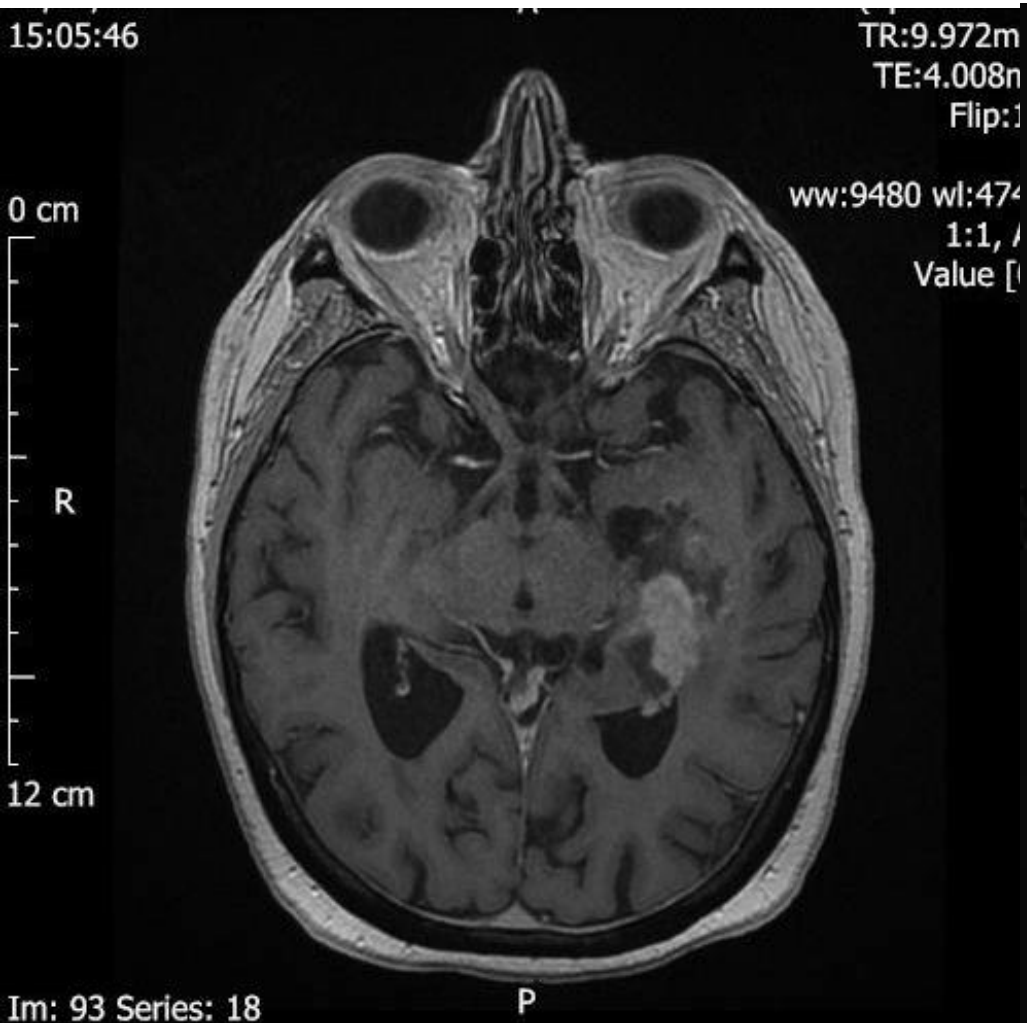


52 year old right handed woman presents with weakness of her right leg.  
Describe the scan



52 year old right handed woman presents with weakness of her right leg. She makes a full recovery on steroids  
At the neurosurgical MDT the surgeons suggest a biopsy only  
Do you agree ?

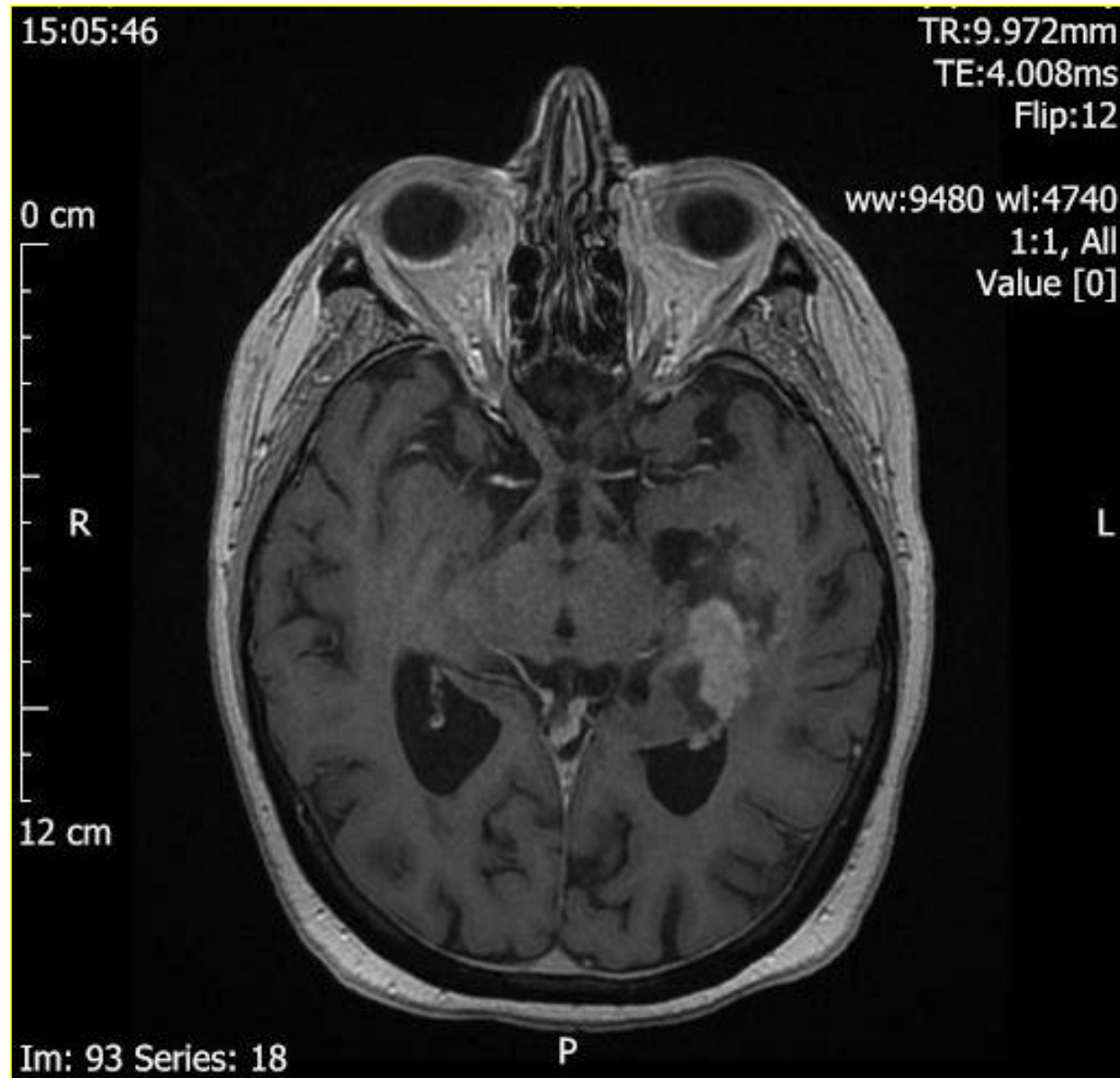


Biopsy: Glioblastoma multiforme

MGMT promotor non methylated

What do you advise?

Outline the GTV and OARs **most** relevant to this case



What radiation technique and dose would you employ ?



What are the tolerance doses for the main Organs at Risk here?



4 months after the last cycle of chemotherapy she remains on 4mg dexamethasone and complains of low back pain.

What possible diagnoses do you record on the MRI request ?

4 months after the last cycle of chemotherapy she remains on 4mg dexamethasone and complains of low back pain.

What does the MRI scan indicate ?





She has low back pain and staging MRI Brain shows some new enhancement and persisting abnormality near the left lateral ventricle.

What do you advise ?

